

Eco Software v5.0

Upgrade Instructions

FOR RESEARCH USE ONLY

Introduction	3
Downloading the Eco Software	4
Upgrading the Eco Software	5
Upgrading Your Templates to be v5.0 Compatible	9
Technical Assistance	11



This document and its contents are proprietary to Illumina, Inc. and its affiliates ("Illumina"), and are intended solely for the contractual use of its customer in connection with the use of the product(s) described herein and for no other purpose. This document and its contents shall not be used or distributed for any other purpose and/or otherwise communicated, disclosed, or reproduced in any way whatsoever without the prior written consent of Illumina. Illumina does not convey any license under its patent, trademark, copyright, or common-law rights nor similar rights of any third parties by this document.

The instructions in this document must be strictly and explicitly followed by qualified and properly trained personnel in order to ensure the proper and safe use of the product(s) described herein. All of the contents of this document must be fully read and understood prior to using such product(s).

FAILURE TO COMPLETELY READ AND EXPLICITLY FOLLOW ALL OF THE INSTRUCTIONS CONTAINED HEREIN MAY RESULT IN DAMAGE TO THE PRODUCT(S), INJURY TO PERSONS, INCLUDING TO USERS OR OTHERS, AND DAMAGE TO OTHER PROPERTY.

ILLUMINA DOES NOT ASSUME ANY LIABILITY ARISING OUT OF THE IMPROPER USE OF THE PRODUCT(S) DESCRIBED HEREIN (INCLUDING PARTS THEREOF OR SOFTWARE) OR ANY USE OF SUCH PRODUCT(S) OUTSIDE THE SCOPE OF THE EXPRESS WRITTEN LICENSES OR PERMISSIONS GRANTED BY ILLUMINA IN CONNECTION WITH CUSTOMER'S ACQUISITION OF SUCH PRODUCT(S).

FOR RESEARCH USE ONLY

© 2011-2013 Illumina, Inc. All rights reserved.

Illumina, IlluminaDx, BaseSpace, BeadArray, BeadXpress, cBot, CSPRO, DASL, DesignStudio, Eco, GAIIX, Genetic Energy, Genome Analyzer, GenomeStudio, GoldenGate, HiScan, HiSeq, Infinium, iSelect, MiSeq, Nextera, NuPCR, SeqMonitor, Solexa, TruSeq, TruSight, VeraCode, the pumpkin orange color, and the Genetic Energy streaming bases design are trademarks or registered trademarks of Illumina, Inc. All other brands and names contained herein are the property of their respective owners.

Introduction

This document provides instructions on downloading the installer for the latest Eco Software, upgrading the software on your computer, upgrading the firmware on your Eco instrument, and upgrading any templates you have saved to be compatible with the Eco v5.0 Software.

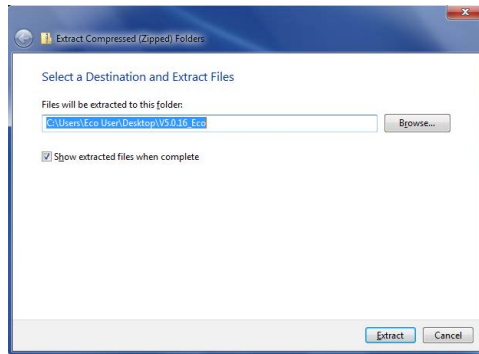


NOTE

If the Full version of the .NET Framework 4.0 software is not already installed on the computer, this installation can take up to 20 minutes. During that time, you might not see any progress on the screen; however, the installation is still running in the background. Please refrain from attempting to stop or relaunch the setup program while the installation is running; this can cause the installation to fail.

Downloading the Eco Software

- 1 Follow the “Eco_EcoStudy_v.5.0_Download” link in the email you received from Illumina or found on the Software tab for the Eco Real-Time PCR System on the Illumina web site (<http://www.illumina.com/systems/ecoqpcr.ilmn>).
- 2 When you arrive at the landing page where the software installer is located, click the **Download** button.
- 3 Click **Save** to download the Eco_EcoStudy_v.5.0_Software_Content_Pack.zip file.
- 4 Move the Eco_EcoStudy_v.5.0_Software_Content_Pack.zip file to your desired location and select **Extract**.



TIP

To install the Eco software on your notebook or other computers, move the Eco_EcoStudy_v.5.0_Software_Content_Pack.zip folder onto a USB drive.

Upgrading the Eco Software

Before starting your software upgrade on the computer:

- ▶ Close all open software applications.
- ▶ Make sure the power cables and Ethernet cables are properly connected.
- ▶ Make sure the Eco instrument is turned on.
- ▶ Make sure that the Eco instrument is recognized by the computer.

Steps to Upgrade your Eco Software and Firmware



NOTE

For a successful upgrade, you must complete Steps 1 and 2. These steps make sure the Eco instrument is connected to the Eco software.

- 1 Double-click the Eco desktop icon to open the Eco Software.



The old 4.0 version of the software is listed on the screen.

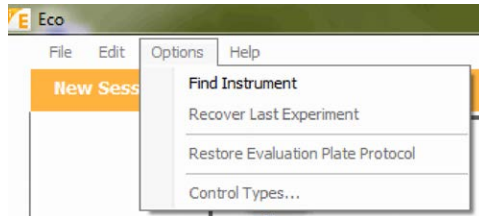


- 2 You will be prompted if Eco software is not connected to an instrument.



Select yes if you want to connect to the last instrument.

If you want to connect to a different instrument, select the **Options** menu and then select **Find Instrument**.



After the instrument and the software are connected, close the Eco software.

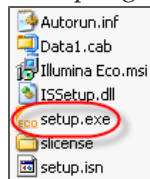


NOTE

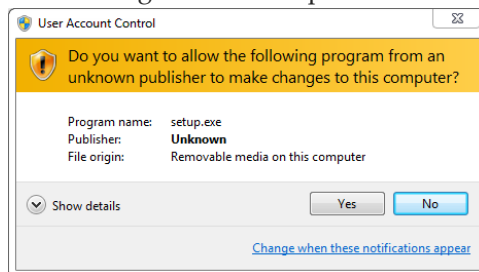
Instrument and software connection is necessary for a successful upgrade. Make sure to complete Steps 1 and 2 before proceeding to Step 3.

- 3 Right-click the Eco_EcoStudy_v.5.0_Software_Content_Pack.zip file and select **Extract All**.
- 4 Open the Eco_EcoStudy_v.5.0_Software_Content_Pack\Eco_v.5.0 subfolder.
- 5 Right-click the V5.0.00_Eco.zip file and select **WinZip | Extract to here**.
- 6 Double-click **setup.exe**.

It could take up to one minute for the setup program to launch. Please refrain from attempting to launch the setup program multiple times.



- 7 Select **Yes** when the User Account Control dialog box prompts for permission to make changes to the computer.



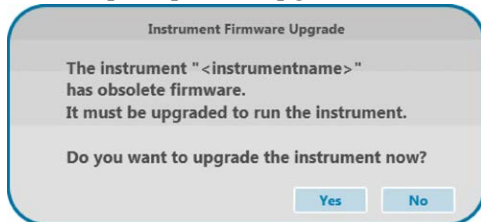
- 8 Follow the prompts in the software installation wizard to install the latest Eco software onto the computer.



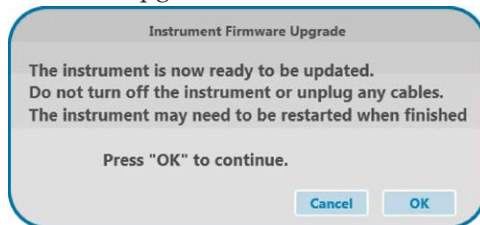
- 9 When the wizard is complete, select **Finish** to close.
- 10 Double-click the Eco desktop icon to open the Eco Software v5.0.



- 11 You are prompted to upgrade the firmware. Select **Yes**.

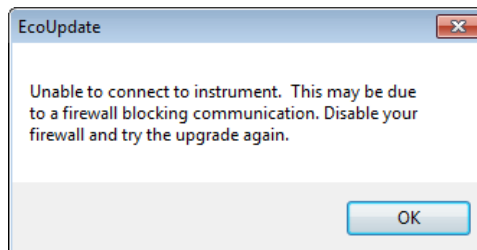


- a Read the instructions in the upgrade dialog box, and then select **OK** to begin the firmware upgrade.

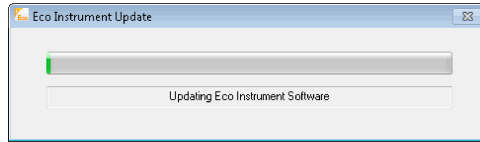


NOTE

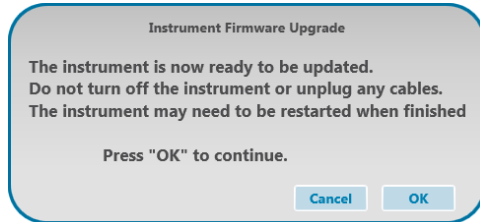
The firmware upgrade might require you to temporarily disable the anti-virus firewall. If the following dialog box opens, disable the firewall before continuing.



- b The firmware upgrade can take up to six minutes to complete.



- c Select OK. The Eco Software will close.



- d Double-click the Eco desktop icon to open the Eco Software v5.0.



- e Wait 2 minutes for the software to connect to the Eco instrument.



NOTE

After the upgrade is complete, you may see a message that warns you not to insert your plate until the initialization is complete. If you receive this message, do not insert your plate until "Instrument Ready" shows in the status bar.

- 12 When the status bar shows "Instrument Ready", select **Help | About Eco/License Information** and check to make sure the software and firmware upgraded properly. The software should be **5.0.00** and the firmware should be **5.0.11; mcFW 1.28**. (The mcFW number should be followed by a letter, varying by instrument.)



NOTE

If the upgrade did not work properly, cycle the power on the instrument and then retry this installation procedure.

- 13 If you had to disable your firewall, you can reactivate the firewall now.

Upgrading Your Templates to be v5.0 Compatible

After upgrading your software and firmware, you must upgrade any templates you have saved on your system. If you do not upgrade your templates, the data generated using those templates will be incorrect.

To upgrade your templates to be compatible with the Eco v5.0 Software, you will need to re-open an experiment that was run with the desired template and then save it as a template, overwriting the previous version. Complete the following steps only after having completed the software and firmware upgrades.



NOTE

You cannot open and resave the template itself to convert your templates. The template must be recreated from an actual run file.

- 1 Using Eco v5.0, re-open a saved experiment that was run with the desired template.
- 2 Select **File | Save As Template**.
- 3 In the Save As dialog box, enter a name for the template.
To replace the original template, use the same name as the original.
- 4 If you assigned a different name than the original for the v5.0-compatible template, delete the previous version from the templates list.

Notes

Technical Assistance

For technical assistance, go to <http://www.illumina.com/ecoqpcr>.

MSDSs

Material safety data sheets (MSDSs) are available on the Illumina website at <http://www.illumina.com/msds>.

Product Documentation

If you require additional product documentation, you can obtain PDFs from the Illumina website. Go to <http://www.illumina.com/support/documentation.ilmn>.

When you click on a link, you are asked to log in to My Illumina. After you log in, you can view or save the PDF. To register for a My Illumina account, please visit <https://my.illumina.com/Account/Register>.