

NovaSeq X Series 1.5B Flow Cell Recipe Installer

Work Instruction

January 2024

INSTALLATION INSTRUCTIONS

NOTES:

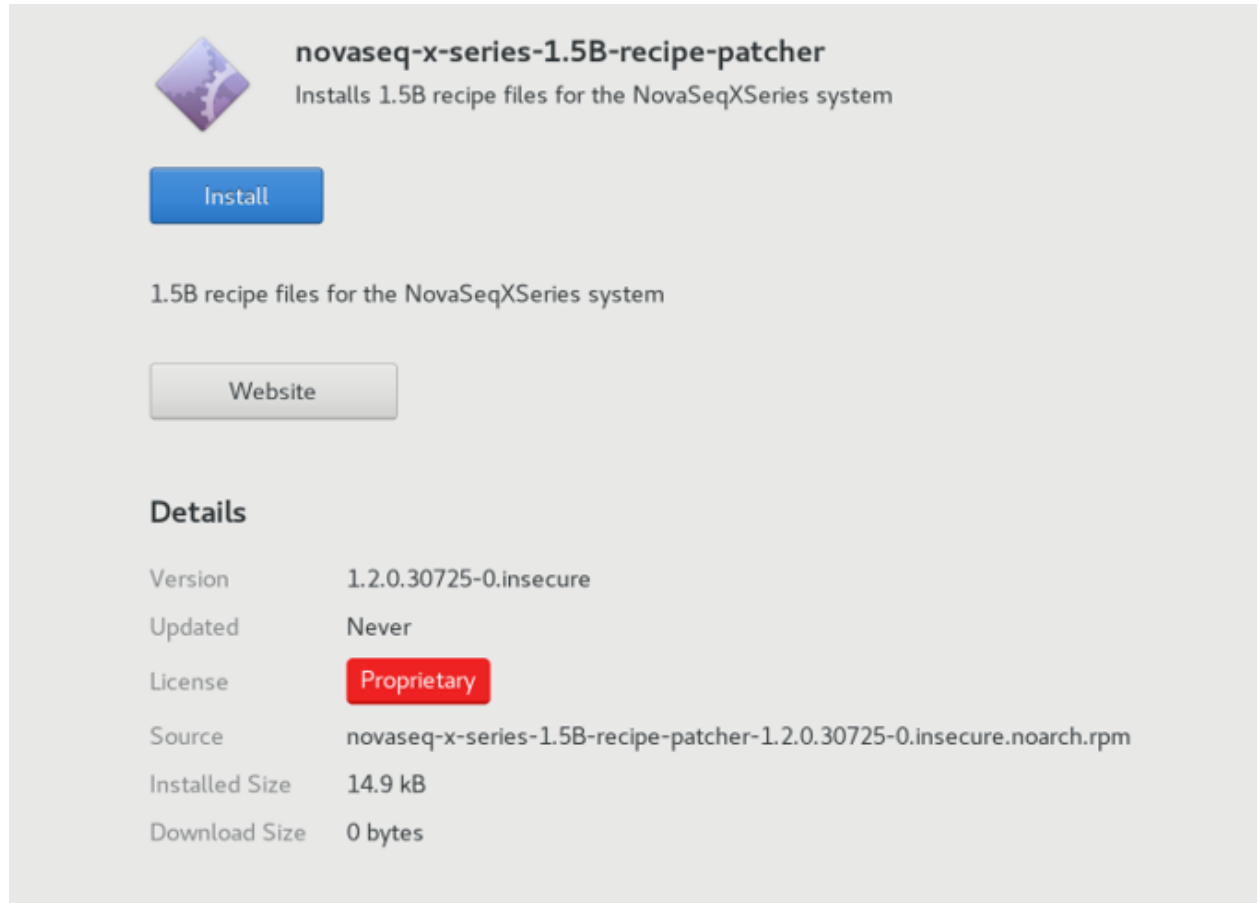
- Only administrators can install updates.
- The recipe installer installs 1.5B recipe files but does not impact the overall software version number (1.2.0.28691).

PREREQUISITES:

- NovaSeq X Plus Sequencing System Software Suite v1.2
- Admin OS account login credentials (for example, ilmadmin)

PROCEDURE:

1. Make sure that the system is logged in to an admin account as follows.
 - a) To navigate to the OS screen, press the **Windows** key on the instrument keyboard.
 - b) Select **Settings** panel in the top-right corner.
 - c) Confirm that the system is logged in to an admin account (for example, ilmadmin).
 - d) If the system is logged in to an admin account, proceed to step 3.
2. If the system is logged in to user account, log in to an admin account as follows.
 - a) If the control software is open, close it as follows.
 - i. Return to control software screen.
 - ii. Select the instrument icon to open the global navigation menu.
 - iii. Select **Settings**.
 - iv. Select **Exit software**.
 - b) From the OS screen, select **Settings Panel** in the top-right corner.
 - c) Select **User**, and then select **Log Out**.
 - d) Log in to an admin account (for example, ilmadmin).
3. Download `novaseq-x-series-recipe-patcher-1.2.1.31478-0.noarch.rpm` from the [NovaSeq X Plus Sequencing System software downloads](#) page to the Downloads directory.
4. Return to the OS screen, and then install the recipe patch as follows.
 - a) Select **Activities** in the top-left corner, and then type `Files`.
 - b) Select the **Files** application.
 - c) Navigate to the Downloads directory.
 - d) Double-click the `novaseq-x-series-recipe-patcher-1.2.1.31478-0.noarch.rpm` file.
 - e) Select **Install**.



f) Enter the admin password.

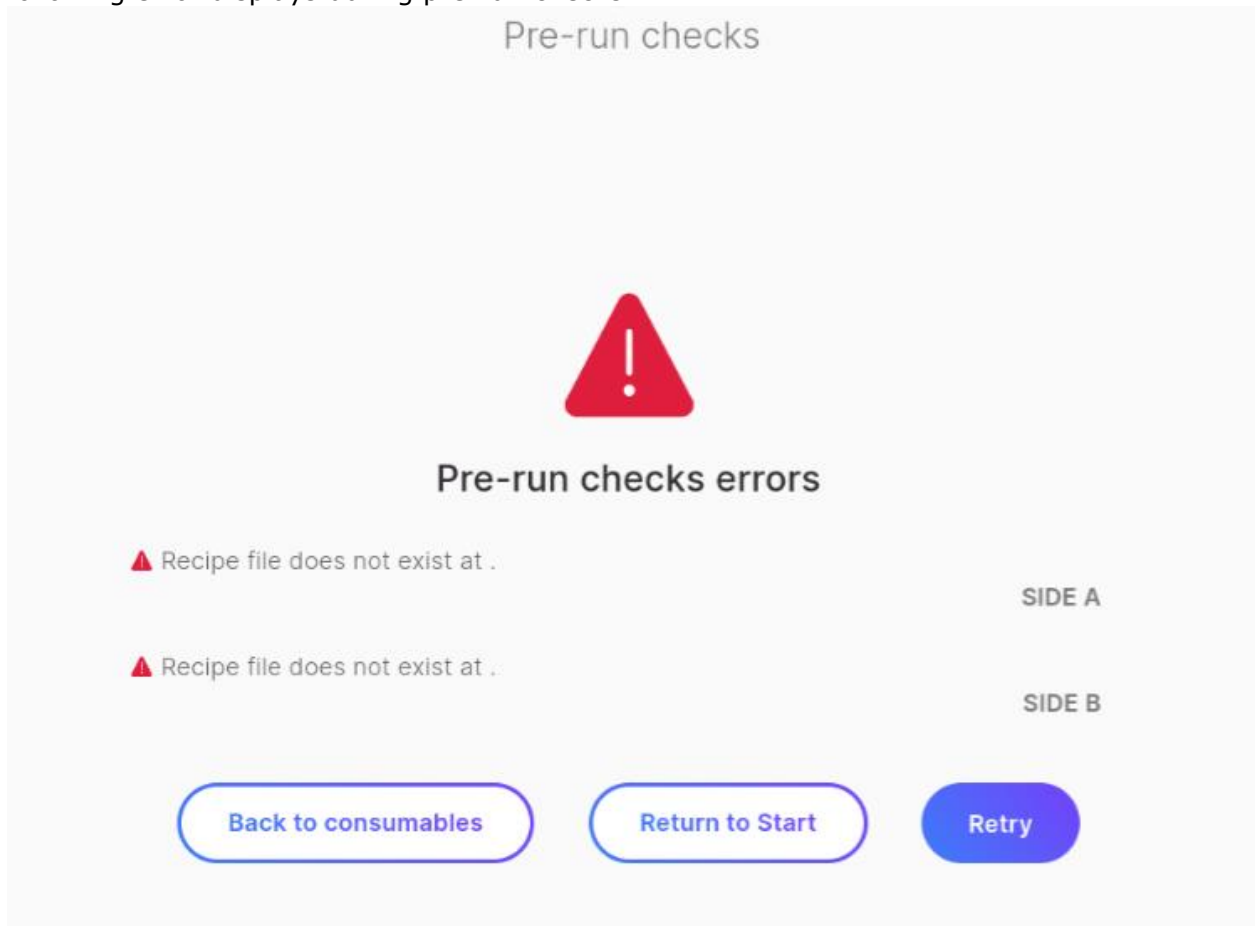
g) Select **Authenticate**.

After a successful installation, the Install button changes color from blue to red and a Remove button appears.

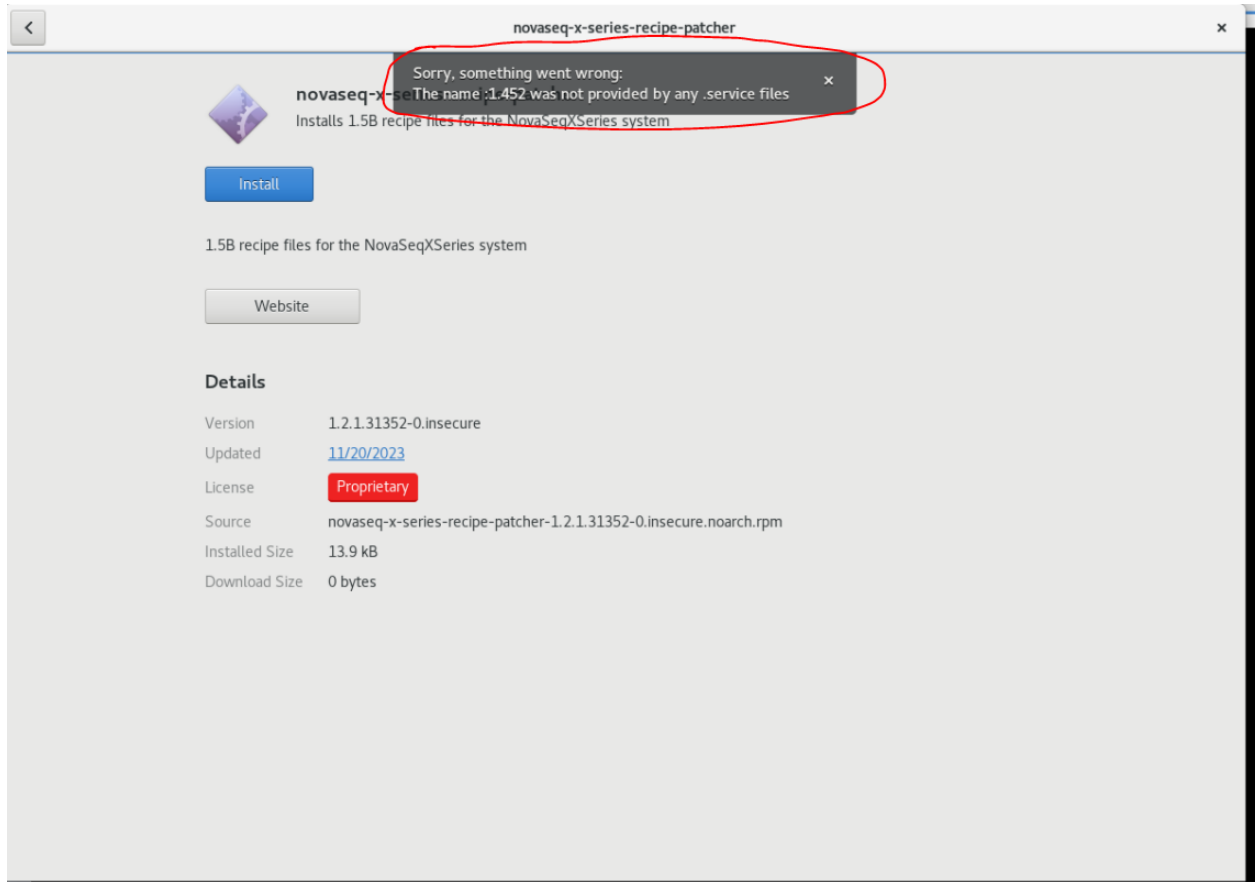


Error Messages:

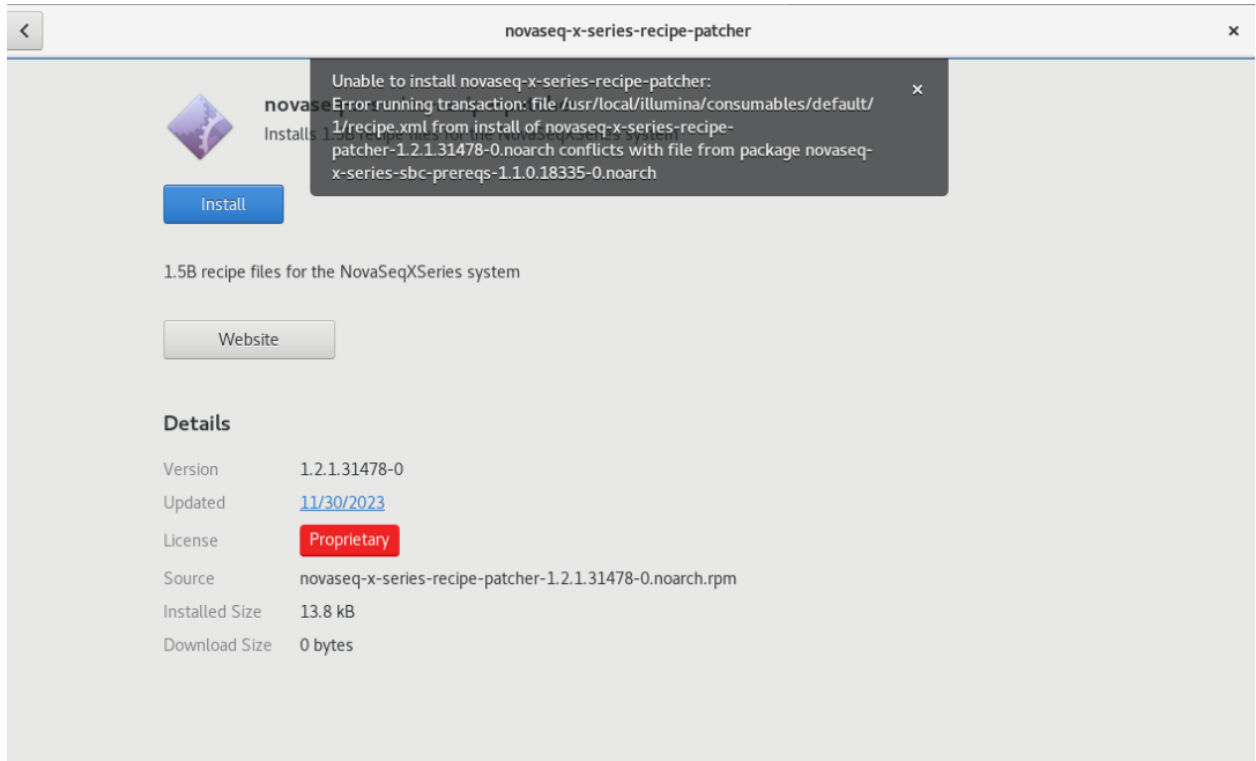
- If you attempt a run with a 1.5B flow cell without running the recipe patch, the following error displays during pre-run checks:



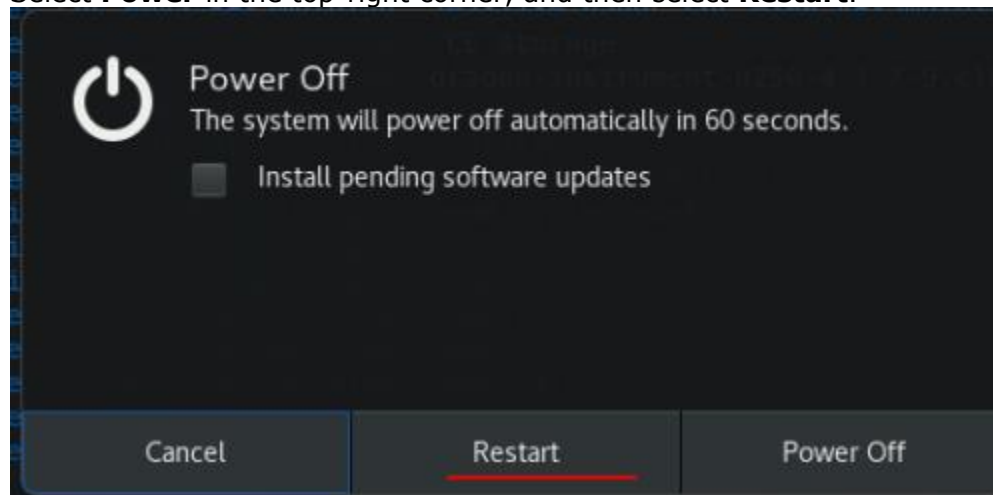
- This error also displays during pre-run checks if the recipe patch was not successful and must be run again. This error does not mark consumables as used.
- If encountered, you can ignore the following message. It does not affect the installation.



- If you attempt to run the recipe patch on a system on software v1.1 or earlier, the following error appears:



- Update the system to software version v1.2 to use 1.5B flow cells.
- If the novaseq-x-series-recipe-patcher screen does not appear after double-clicking the RPM file, a restart might be required.
 - Select **Power** in the top-right corner, and then select **Restart**.



Release History

Version	Release Reference	Originator	Description of Change
00	CN 1101539	Vince Kato	Initial release